



## THE STOCKTON

LOUDERMILK  
CUSTOM HOMES

[www.loudermilkhomes.com](http://www.loudermilkhomes.com) | office: 770.485.2600 | email: [info@loudermilkhomes.com](mailto:info@loudermilkhomes.com)  
1827 Powers Ferry Road, Building 6, Atlanta, GA 30339



LOUDERMILK  
CUSTOM HOMES

## THE STOCKTON





LOUDERMILK  
CUSTOM HOMES

# THE STOCKTON





THE STOCKTON

LOUDERMILK  
CUSTOM HOMES

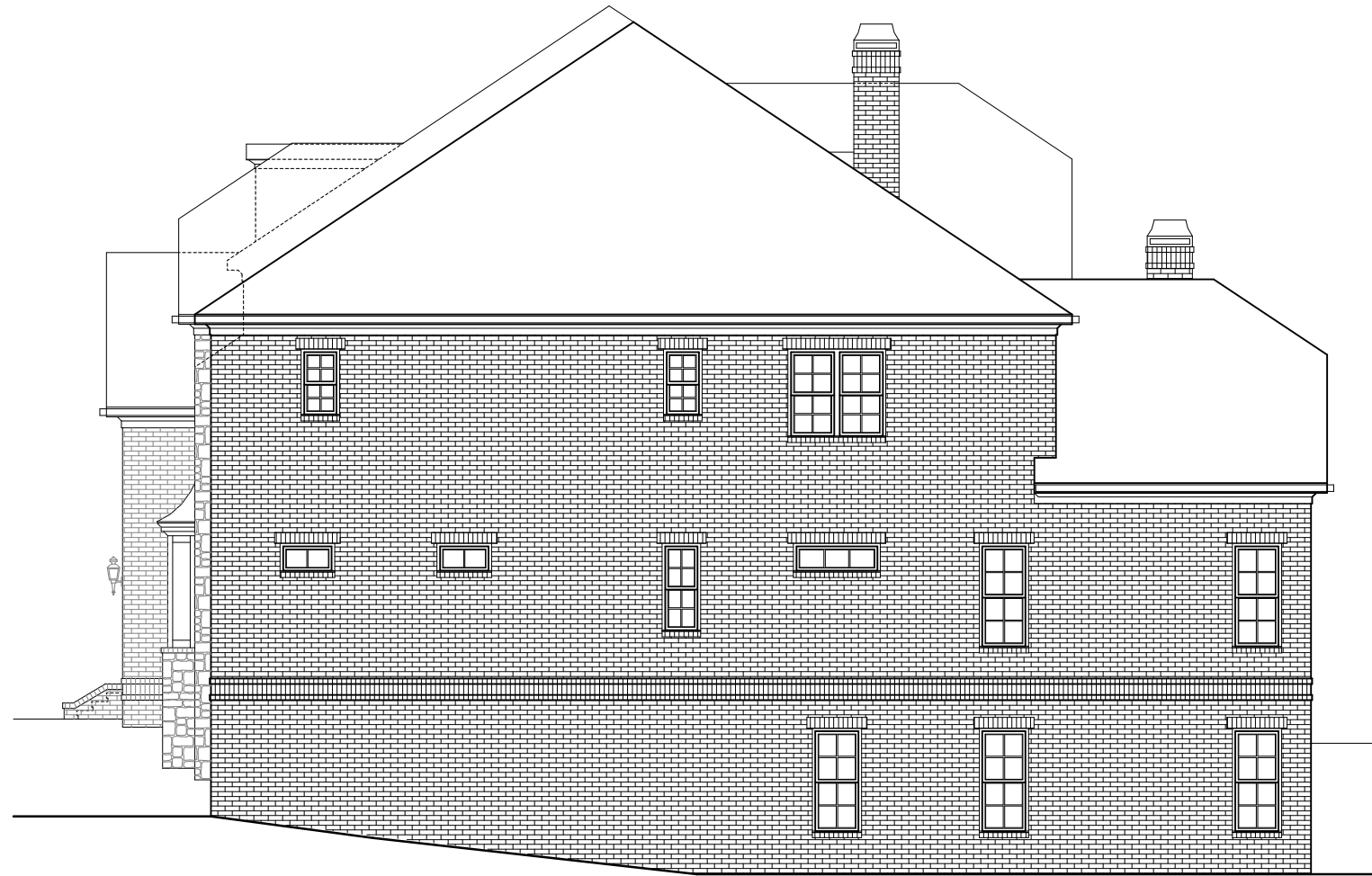


FRONT ELEVATION    [www.loudermilkhomes.com](http://www.loudermilkhomes.com) | office: 770.485.2600 | email: [info@loudermilkhomes.com](mailto:info@loudermilkhomes.com)  
1827 Powers Ferry Road, Building 6, Atlanta, GA 30339



LOUDERMILK  
CUSTOM HOMES

THE STOCKTON



RIGHT ELEVATION

[www.loudermilkhomes.com](http://www.loudermilkhomes.com) | office: 770.485.2600 | email: [info@loudermilkhomes.com](mailto:info@loudermilkhomes.com)  
1827 Powers Ferry Road, Building 6, Atlanta, GA 30339



LOUDERMILK  
CUSTOM HOMES

THE STOCKTON



LEFT ELEVATION

[www.loudermilkhomes.com](http://www.loudermilkhomes.com) | office: 770.485.2600 | email: [info@loudermilkhomes.com](mailto:info@loudermilkhomes.com)  
1827 Powers Ferry Road, Building 6, Atlanta, GA 30339



THE STOCKTON

LOUDERMILK  
CUSTOM HOMES



REAR ELEVATION

[www.loudermilkhomes.com](http://www.loudermilkhomes.com) | office: 770.485.2600 | email: [info@loudermilkhomes.com](mailto:info@loudermilkhomes.com)

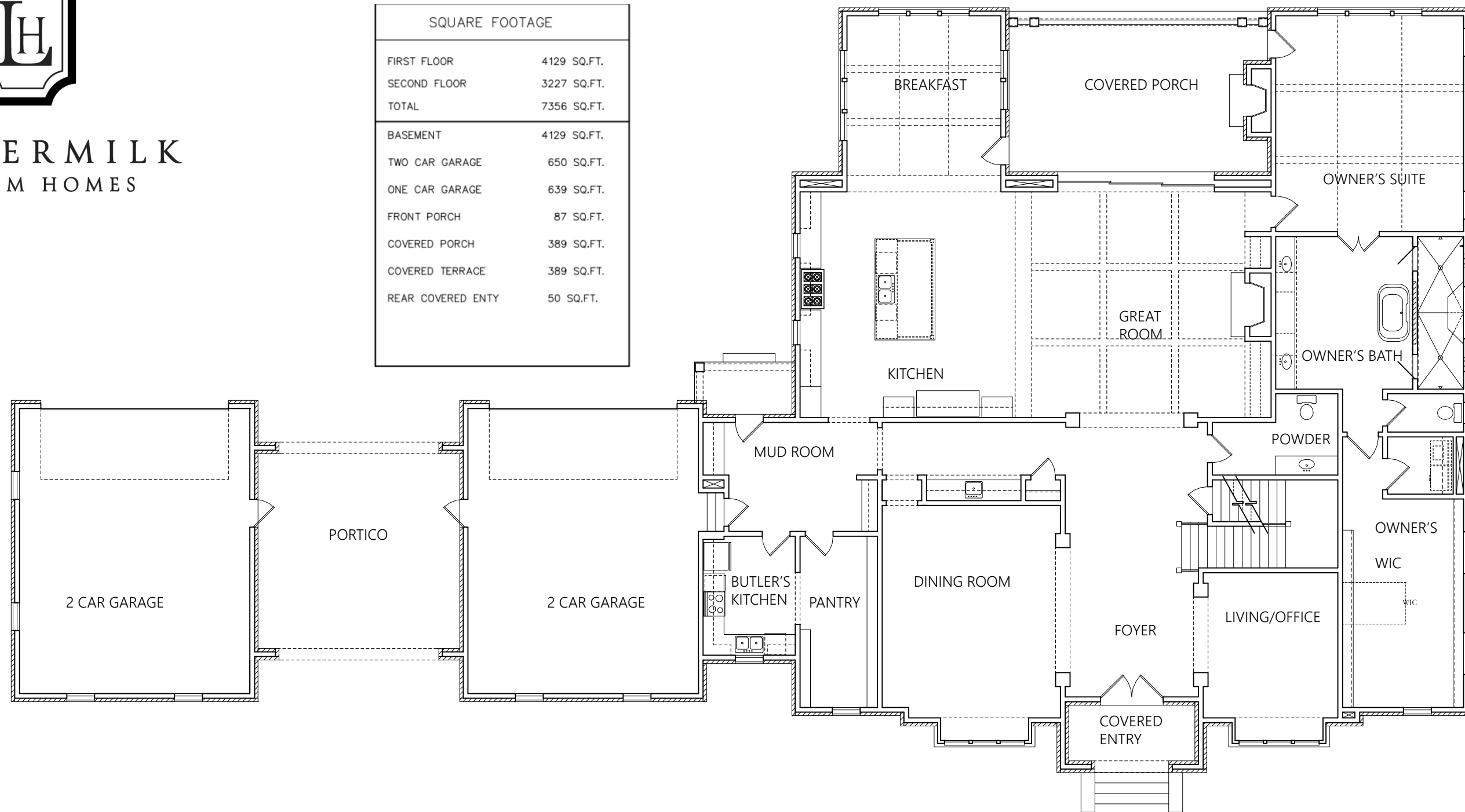
1827 Powers Ferry Road, Building 6, Atlanta, GA 30339



LOUDERMILK  
CUSTOM HOMES

# THE STOCKTON

SQUARE FOOTAGE	
FIRST FLOOR	4129 SQ.FT.
SECOND FLOOR	3227 SQ.FT.
TOTAL	7356 SQ.FT.
<hr/>	
BASEMENT	4129 SQ.FT.
TWO CAR GARAGE	650 SQ.FT.
ONE CAR GARAGE	639 SQ.FT.
FRONT PORCH	87 SQ.FT.
COVERED PORCH	389 SQ.FT.
COVERED TERRACE	389 SQ.FT.
REAR COVERED ENTY	50 SQ.FT.



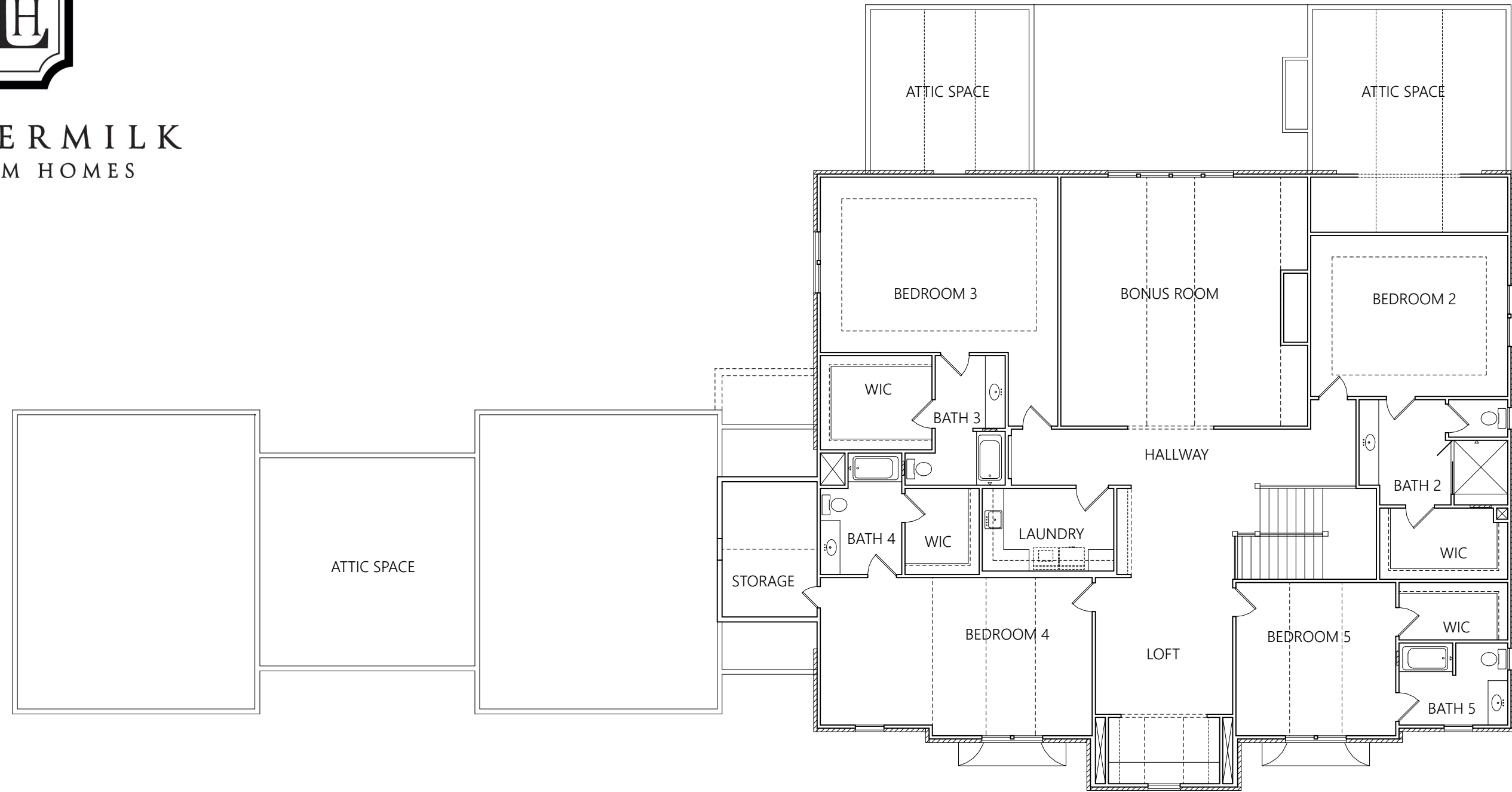
FIRST FLOOR PLAN    [www.loudermilkhomes.com](http://www.loudermilkhomes.com) | office: 770.485.2600 | email: [info@loudermilkhomes.com](mailto:info@loudermilkhomes.com)  
1827 Powers Ferry Road, Building 6, Atlanta, GA 30339





LOUDERMILK  
CUSTOM HOMES

THE STOCKTON

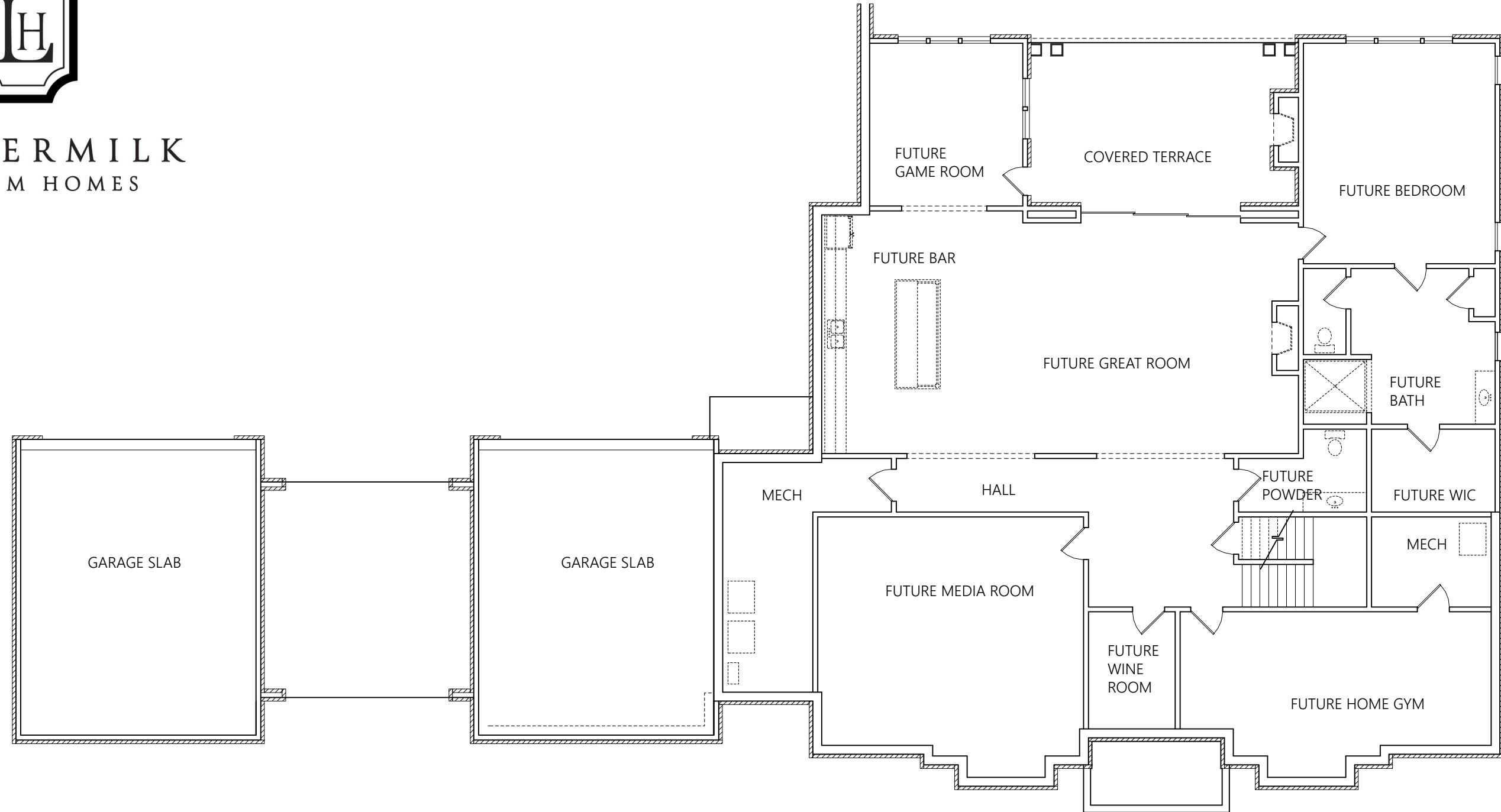


SECOND FLOOR PLAN [www.loudermilkhomes.com](http://www.loudermilkhomes.com) | office: 770.485.2600 | email: [info@loudermilkhomes.com](mailto:info@loudermilkhomes.com)  
1827 Powers Ferry Road, Building 6, Atlanta, GA 30339



LOUDERMILK  
CUSTOM HOMES

THE STOCKTON



BASEMENT FLOOR  
PLAN

[www.loudermilkhomes.com](http://www.loudermilkhomes.com) | office: 770.485.2600 | email: [info@loudermilkhomes.com](mailto:info@loudermilkhomes.com)  
1827 Powers Ferry Road, Building 6, Atlanta, GA 30339