



## THE SUTTON

LOUDERMILK  
CUSTOM HOMES

[www.loudermilkhomes.com](http://www.loudermilkhomes.com) | office: 770.485.2600 | email: [info@loudermilkhomes.com](mailto:info@loudermilkhomes.com)  
1827 Powers Ferry Road, Building 6, Atlanta, GA 30339



LOUDERMILK  
CUSTOM HOMES

## THE SUTTON





LOUDERMILK  
CUSTOM HOMES

# THE SUTTON





LOUDERMILK  
CUSTOM HOMES

THE SUTTON

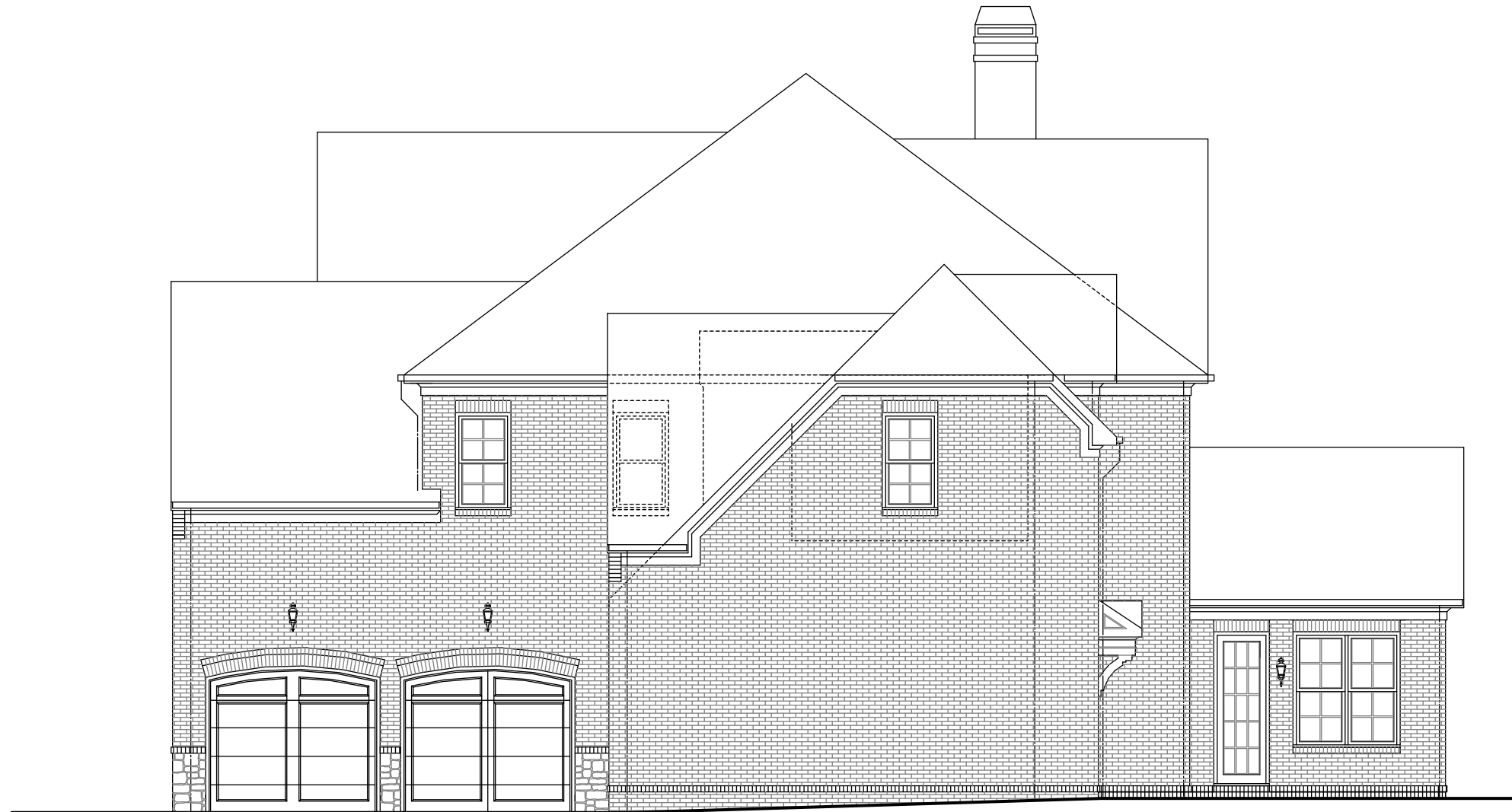


FRONT ELEVATION    [www.loudermilkhomes.com](http://www.loudermilkhomes.com) | office: 770.485.2600 | email: [info@loudermilkhomes.com](mailto:info@loudermilkhomes.com)  
1827 Powers Ferry Road, Building 6, Atlanta, GA 30339



LOUDERMILK  
CUSTOM HOMES

THE SUTTON



LEFT ELEVATION

[www.loudermilkhomes.com](http://www.loudermilkhomes.com) | office: 770.485.2600 | email: [info@loudermilkhomes.com](mailto:info@loudermilkhomes.com)  
1827 Powers Ferry Road, Building 6, Atlanta, GA 30339



LOUDERMILK  
CUSTOM HOMES

THE SUTTON



RIGHT ELEVATION

[www.loudermilkhomes.com](http://www.loudermilkhomes.com) | office: 770.485.2600 | email: [info@loudermilkhomes.com](mailto:info@loudermilkhomes.com)  
1827 Powers Ferry Road, Building 6, Atlanta, GA 30339



LOUDERMILK  
CUSTOM HOMES

THE SUTTON



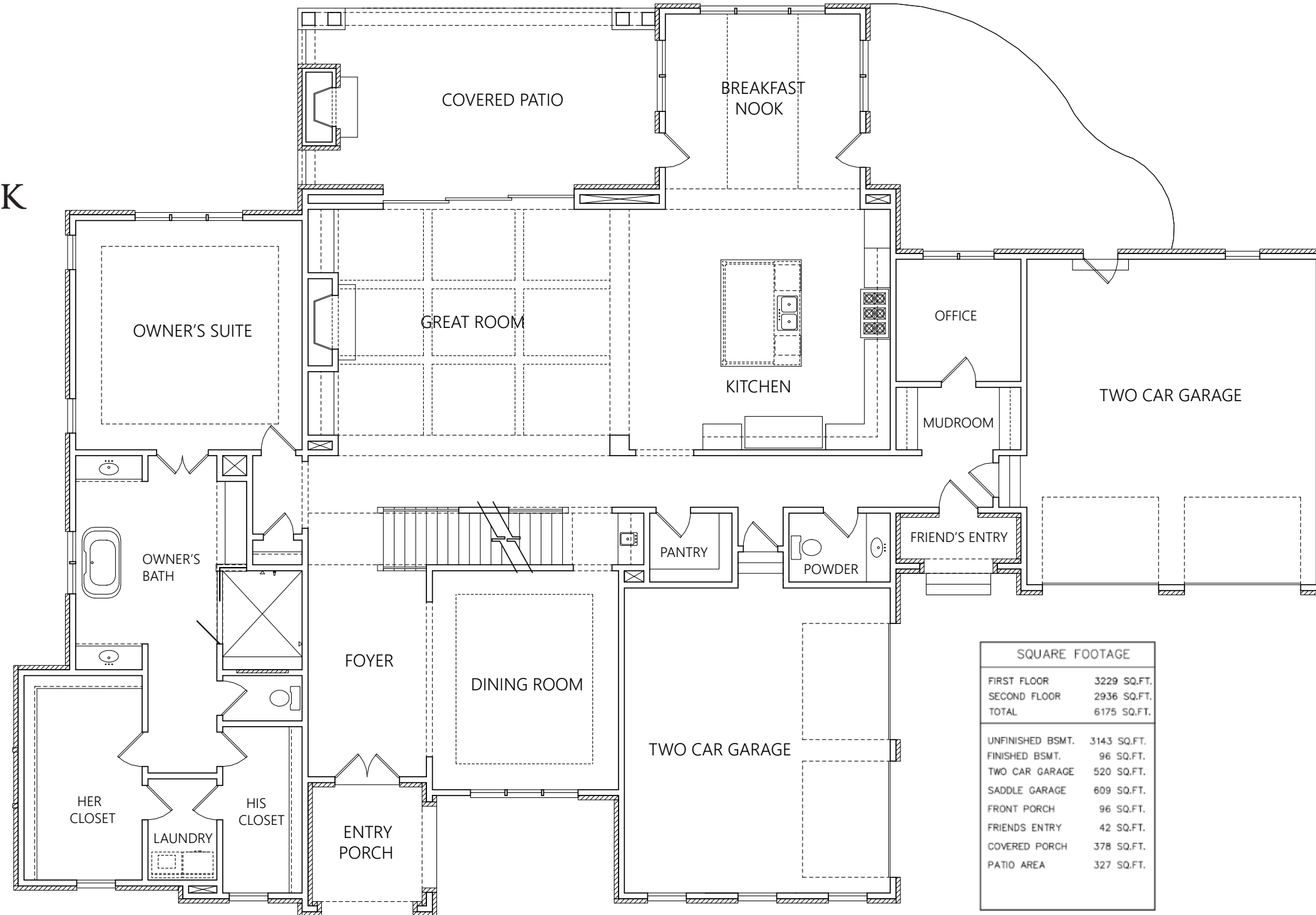
REAR ELEVATION

[www.loudermilkhomes.com](http://www.loudermilkhomes.com) | office: 770.485.2600 | email: [info@loudermilkhomes.com](mailto:info@loudermilkhomes.com)  
1827 Powers Ferry Road, Building 6, Atlanta, GA 30339



LOUDERMILK  
CUSTOM HOMES

# THE SUTTON



SQUARE FOOTAGE	
FIRST FLOOR	3229 SQ.FT.
SECOND FLOOR	2936 SQ.FT.
TOTAL	6175 SQ.FT.
UNFINISHED BSMT.	3143 SQ.FT.
FINISHED BSMT.	96 SQ.FT.
TWO CAR GARAGE	520 SQ.FT.
SADDLE GARAGE	609 SQ.FT.
FRONT PORCH	96 SQ.FT.
FRIENDS ENTRY	42 SQ.FT.
COVERED PORCH	378 SQ.FT.
PATIO AREA	327 SQ.FT.

FIRST FLOOR PLAN

[www.loudermilkhomes.com](http://www.loudermilkhomes.com) | office: 770.485.2600 | email: [info@loudermilkhomes.com](mailto:info@loudermilkhomes.com)  
1827 Powers Ferry Road, Building 6, Atlanta, GA 30339





LOUDERMILK  
CUSTOM HOMES

THE SUTTON

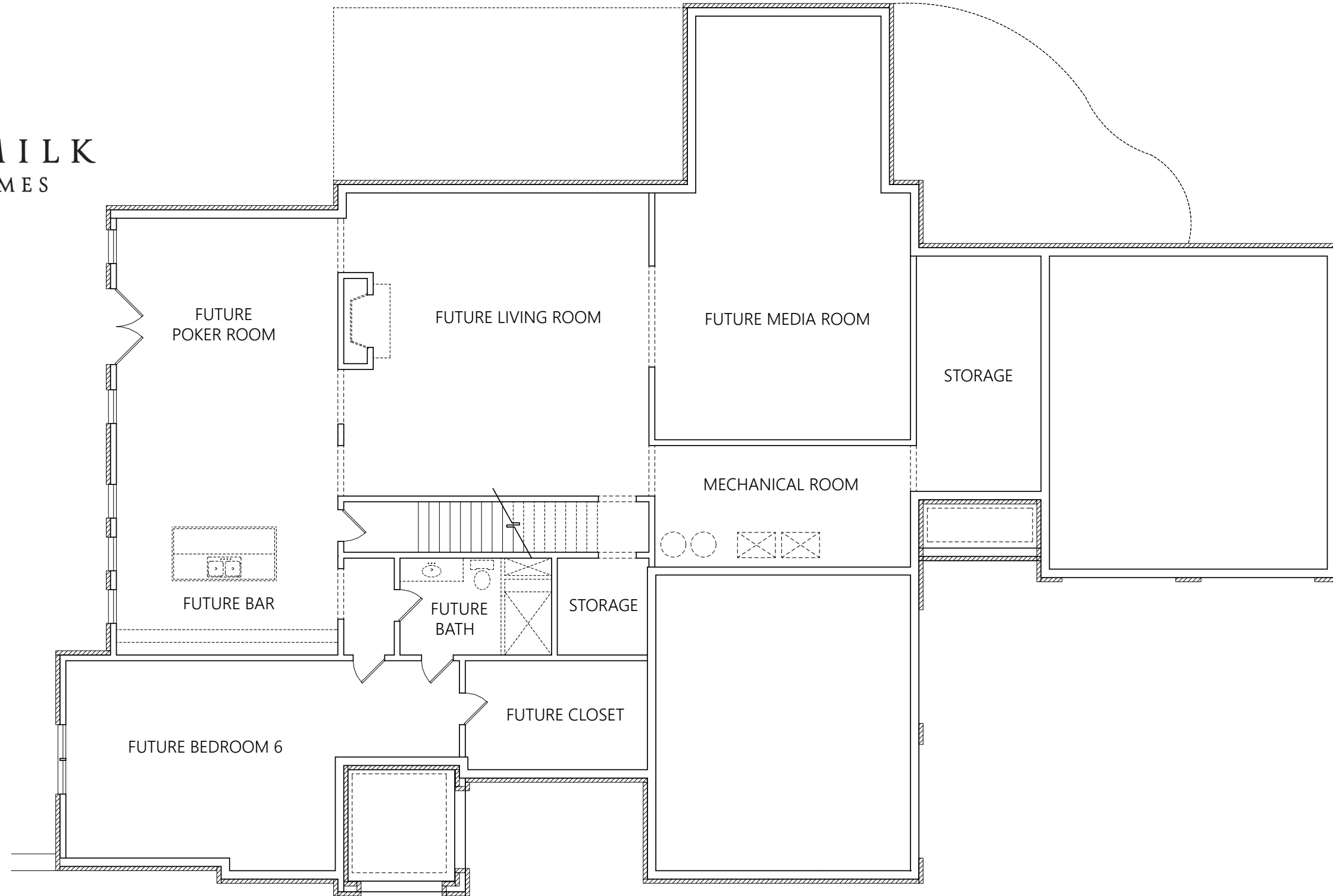


SECOND FLOOR PLAN [www.loudermilkhomes.com](http://www.loudermilkhomes.com) | office: 770.485.2600 | email: [info@loudermilkhomes.com](mailto:info@loudermilkhomes.com)  
1827 Powers Ferry Road, Building 6, Atlanta, GA 30339



LOUDERMILK  
CUSTOM HOMES

THE SUTTON



BASEMENT  
FLOORPLAN

[www.loudermilkhomes.com](http://www.loudermilkhomes.com) | office: 770.485.2600 | email: [info@loudermilkhomes.com](mailto:info@loudermilkhomes.com)  
1827 Powers Ferry Road, Building 6, Atlanta, GA 30339