



LOUDERMILK  
CUSTOM HOMES

# THE LAUREL

Architecture and landscape renderings do not reflect finished selections

[www.loudermilkhomes.com](http://www.loudermilkhomes.com) | office: 700.485.2600 | email: [info@loudermilkhomes.com](mailto:info@loudermilkhomes.com)  
1827 Powers Ferry Road, Building 6, Atlanta, GA 30339



Architecture and landscape renderings do not reflect finished selections



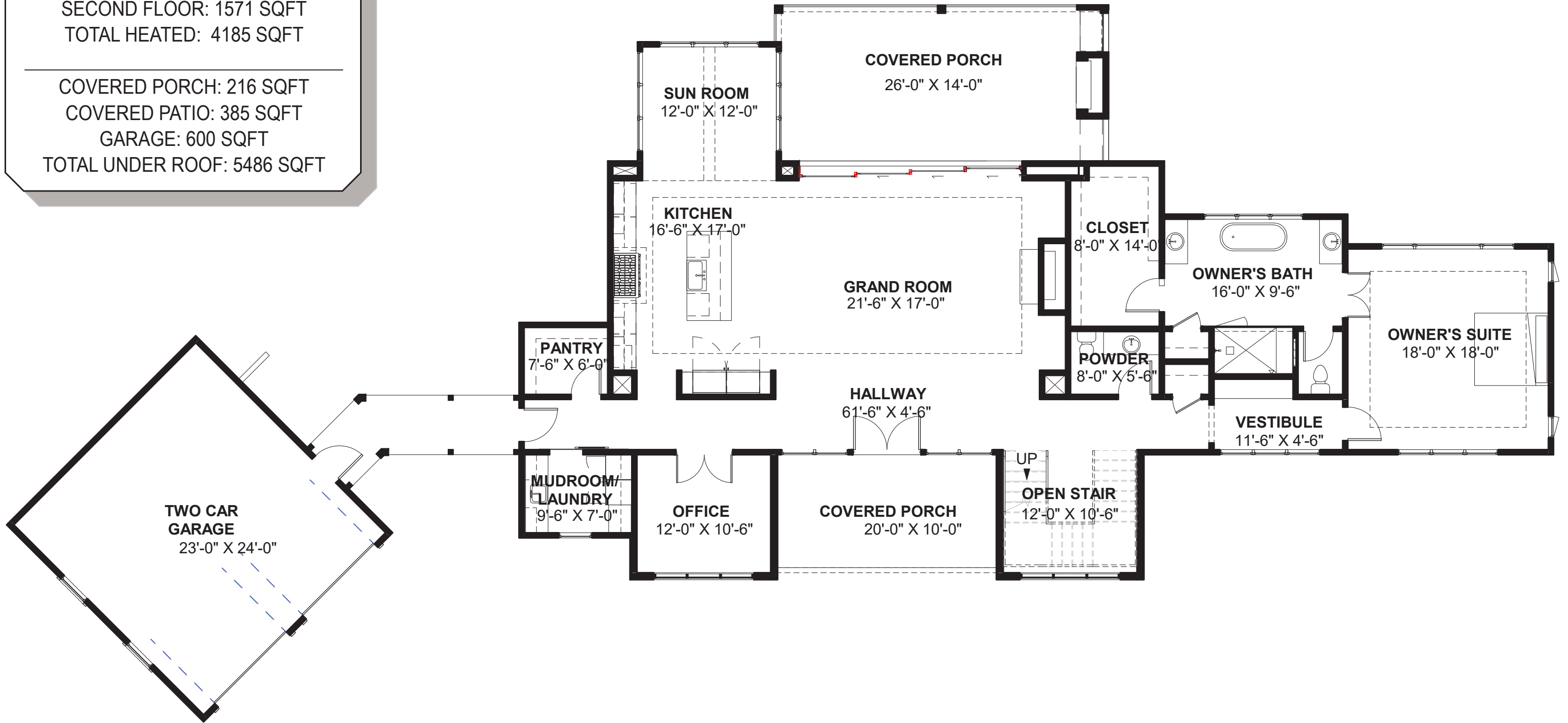
LOUDERMILK  
CUSTOM HOMES

# THE LAUREL

FIRST FLOOR: 2614 SQFT  
SECOND FLOOR: 1571 SQFT  
TOTAL HEATED: 4185 SQFT

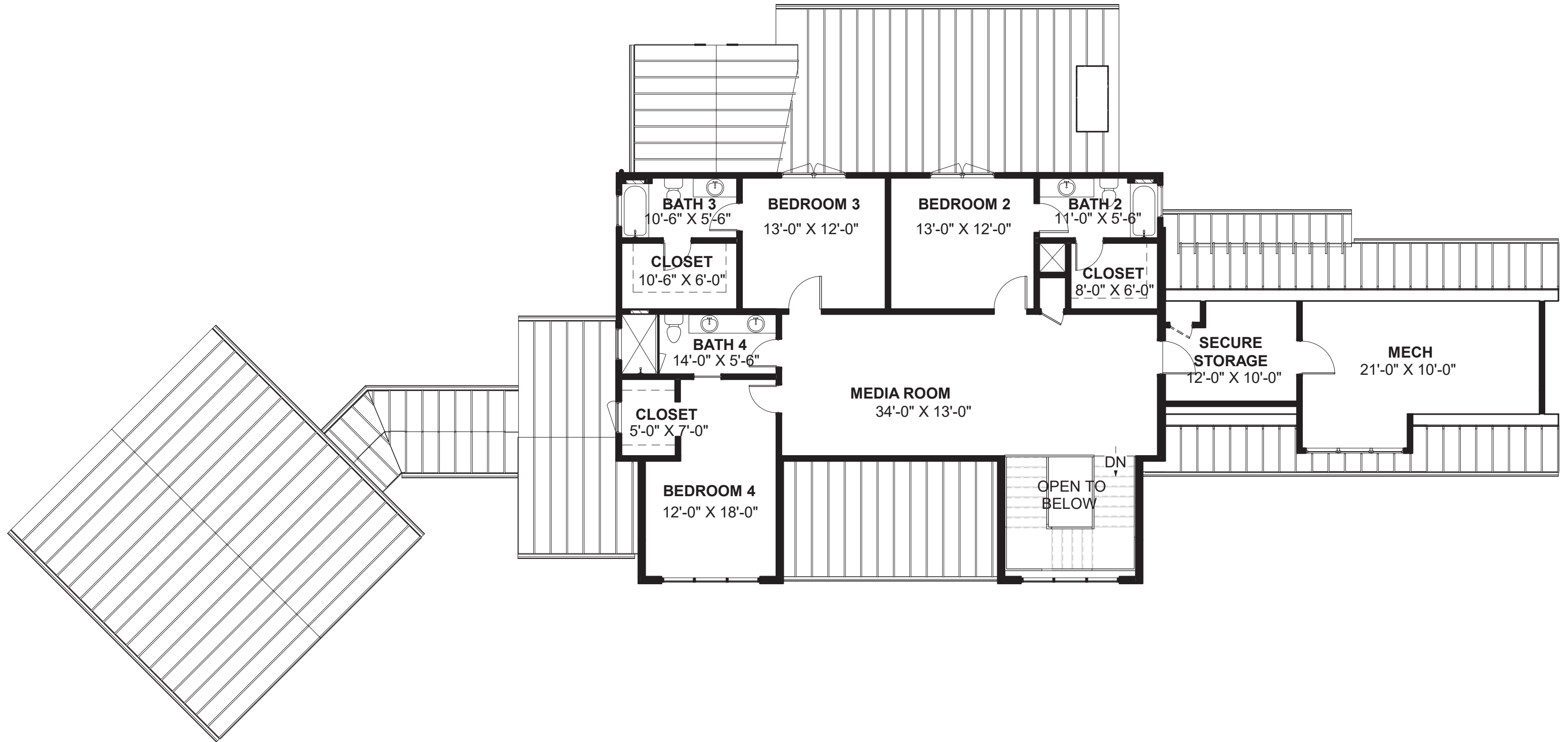
---

COVERED PORCH: 216 SQFT  
COVERED PATIO: 385 SQFT  
GARAGE: 600 SQFT  
TOTAL UNDER ROOF: 5486 SQFT



## FIRST FLOOR PLAN

Architecture and landscape renderings do not reflect finished selections



SECOND FLOOR PLAN



FRONT ELEVATION



REAR ELEVATION