



## THE AUTUMN

LOUDERMILK  
CUSTOM HOMES

[www.loudermilkhomes.com](http://www.loudermilkhomes.com) | office: 770.485.2600 | email: [info@loudermilkhomes.com](mailto:info@loudermilkhomes.com)  
1827 Powers Ferry Road, Building 6, Atlanta, GA 30339



# THE AUTUMN

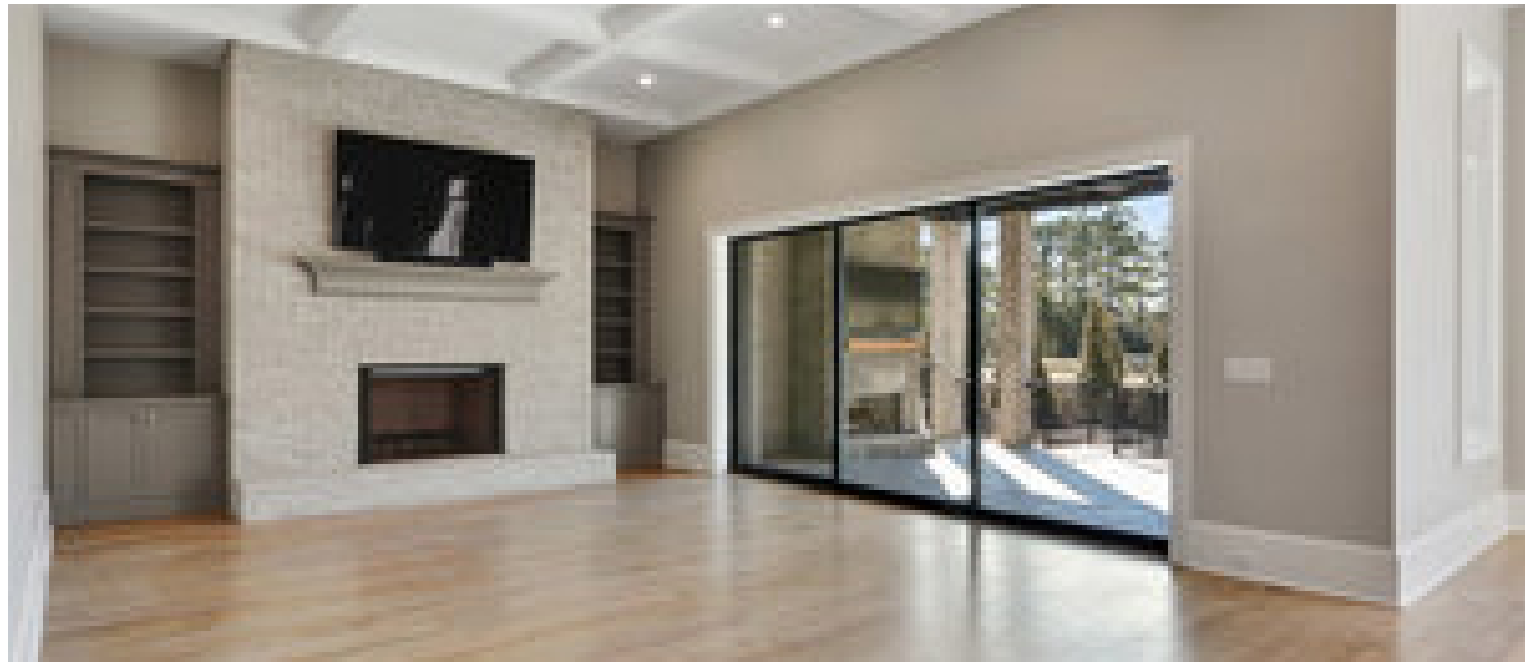
LOUDERMILK  
CUSTOM HOMES





LOUDERMILK  
CUSTOM HOMES

## THE AUTUMN





LOUDERMILK  
CUSTOM HOMES

THE AUTUMN

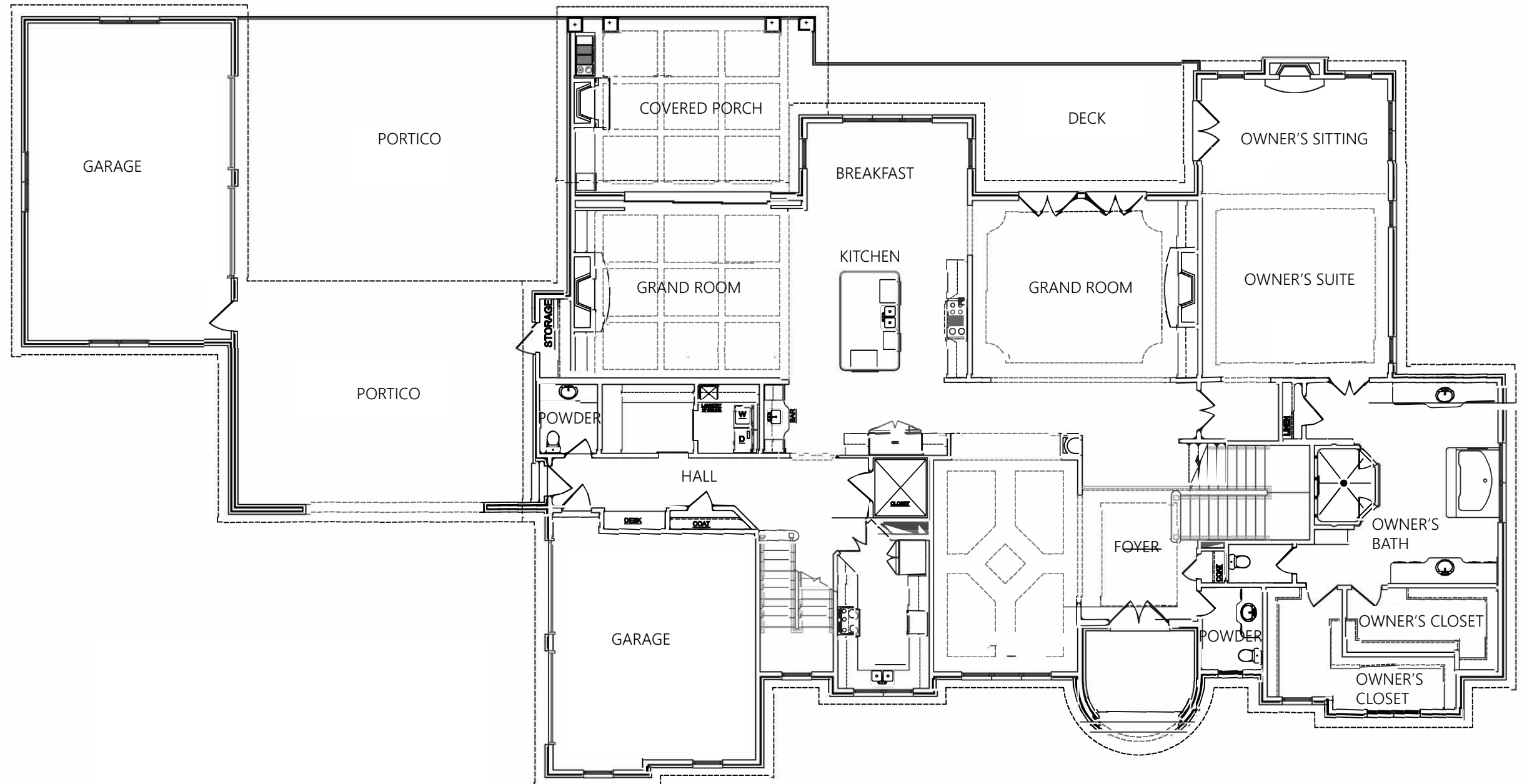


FRONT ELEVATION    [www.loudermilkhomes.com](http://www.loudermilkhomes.com) | office: 770.485.2600 | email: [info@loudermilkhomes.com](mailto:info@loudermilkhomes.com)  
1827 Powers Ferry Road, Building 6, Atlanta, GA 30339



LOUDERMILK  
CUSTOM HOMES

THE AUTUMN

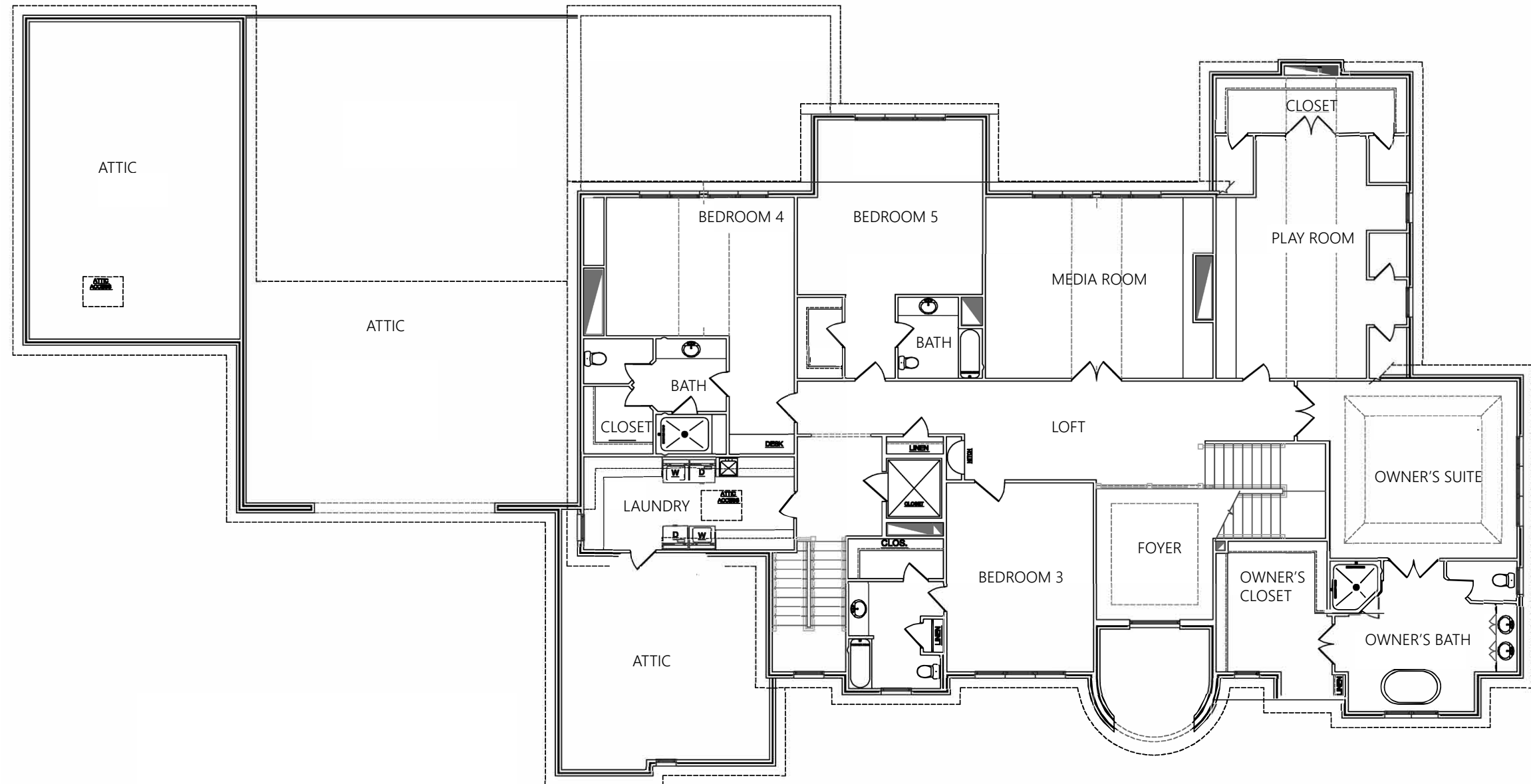


FIRST FLOOR PLAN    [www.loudermilkhomes.com](http://www.loudermilkhomes.com) | office: 770.485.2600 | email: [info@loudermilkhomes.com](mailto:info@loudermilkhomes.com)  
1827 Powers Ferry Road, Building 6, Atlanta, GA 30339



LOUDERMILK  
CUSTOM HOMES

THE AUTUMN

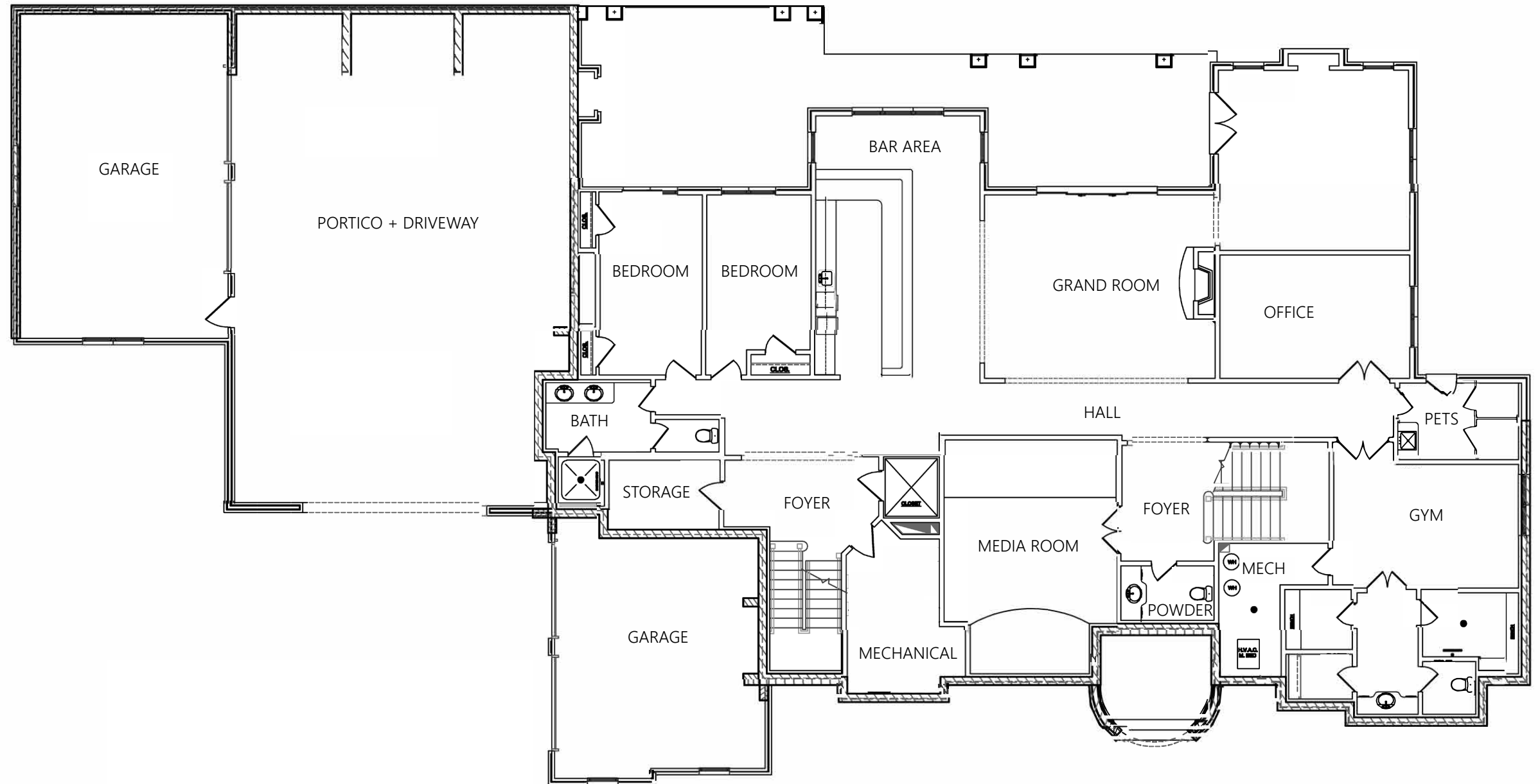


SECOND FLOOR PLAN [www.loudermilkhomes.com](http://www.loudermilkhomes.com) | office: 770.485.2600 | email: [info@loudermilkhomes.com](mailto:info@loudermilkhomes.com)  
1827 Powers Ferry Road, Building 6, Atlanta, GA 30339



LOUDERMILK  
CUSTOM HOMES

THE AUTUMN



SQUARE FOOTAGE	
FIRST FLOOR	4151 SQ.FT.
SECOND FLOOR	3286 SQ.FT.
TOTAL	7437 SQ.FT.
MAIN TWO CAR GARAGE	647 SQ.FT.
SECONDARY CAR GARAGE	540 SQ.FT.
COVERED FRONT ENTRY	64 SQ.FT.
COVERED TERRACE	342 SQ.FT.

BASEMENT  
FLOORPLAN

[www.loudermilkhomes.com](http://www.loudermilkhomes.com) | office: 770.485.2600 | email: [info@loudermilkhomes.com](mailto:info@loudermilkhomes.com)  
1827 Powers Ferry Road, Building 6, Atlanta, GA 30339